

Problem Reporting

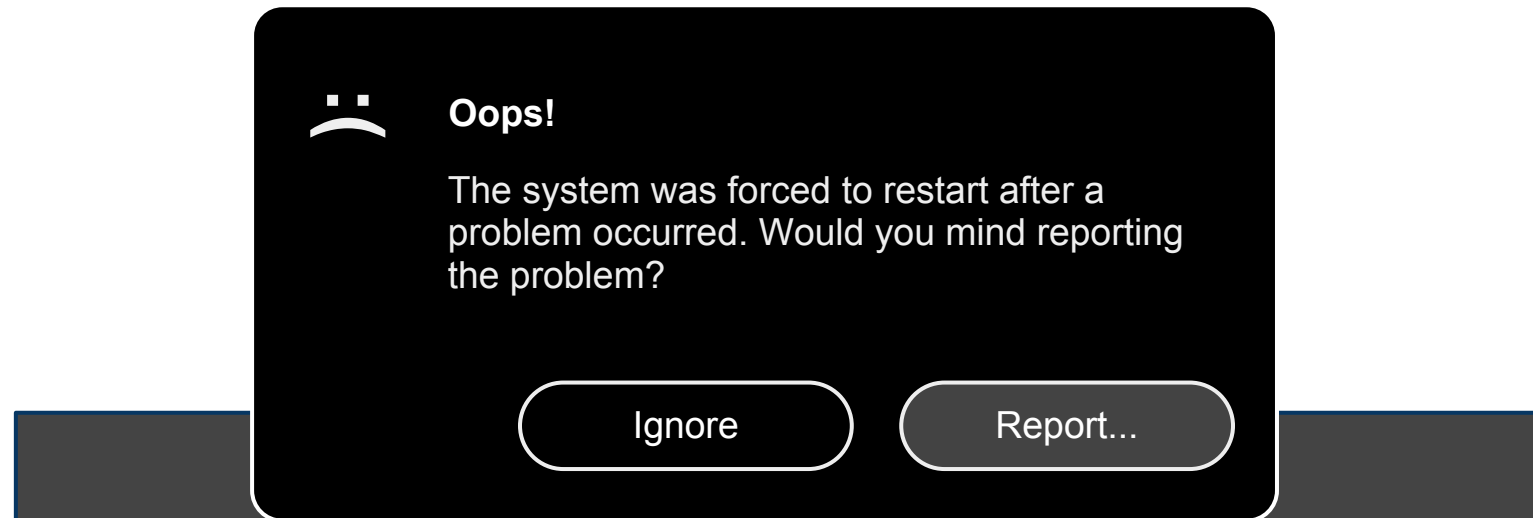
Fatal System Error

This may occur with any form of trouble during boot or OS level failure conditions during normal operation. When system fails, try to recover. If unable to recover display something like this:

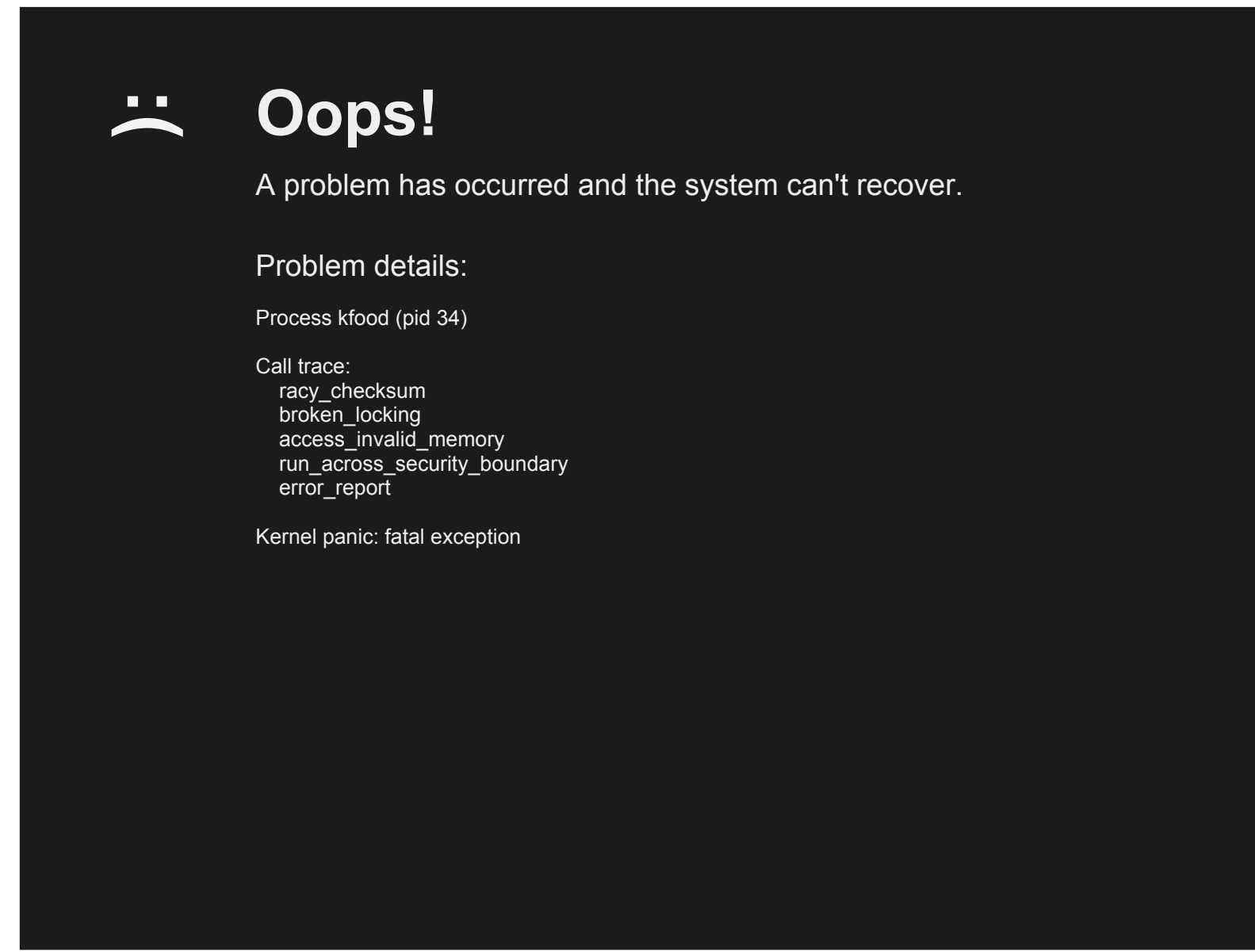
Normal / Managed



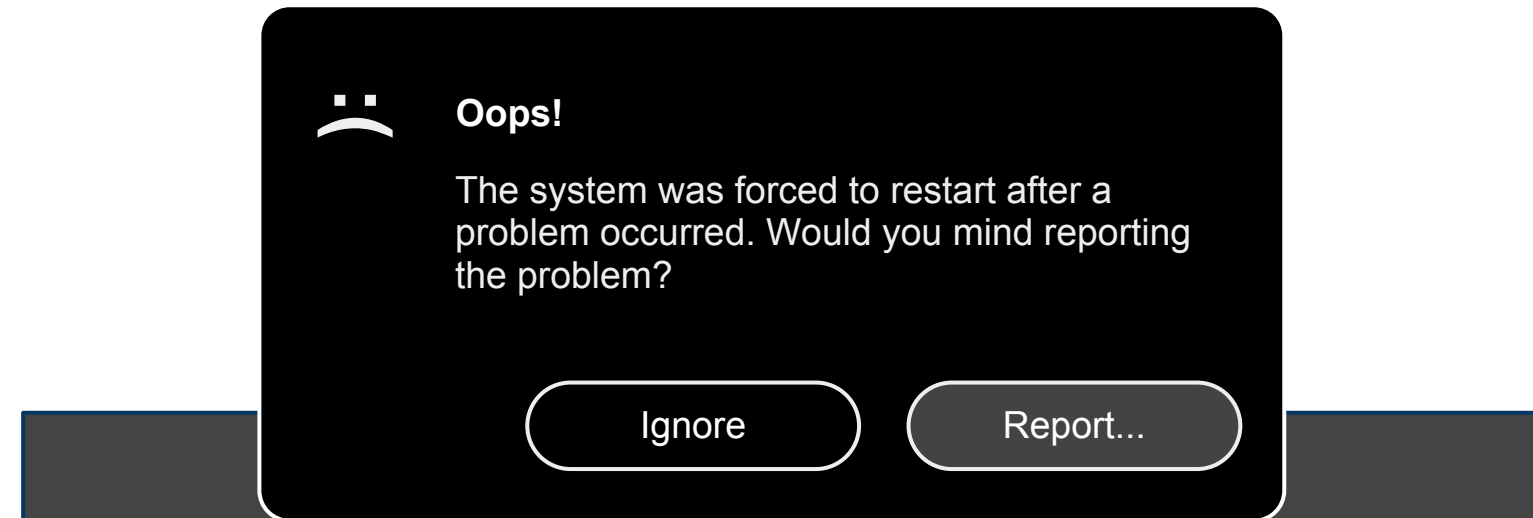
We can't rely on networking or user input. Restart should not be performed automatically because the user may not know what happened, we can enter restart loops, chances are that just rebooting won't fix the error. Additionally, the user may want to enter diagnostic mode after the restart.



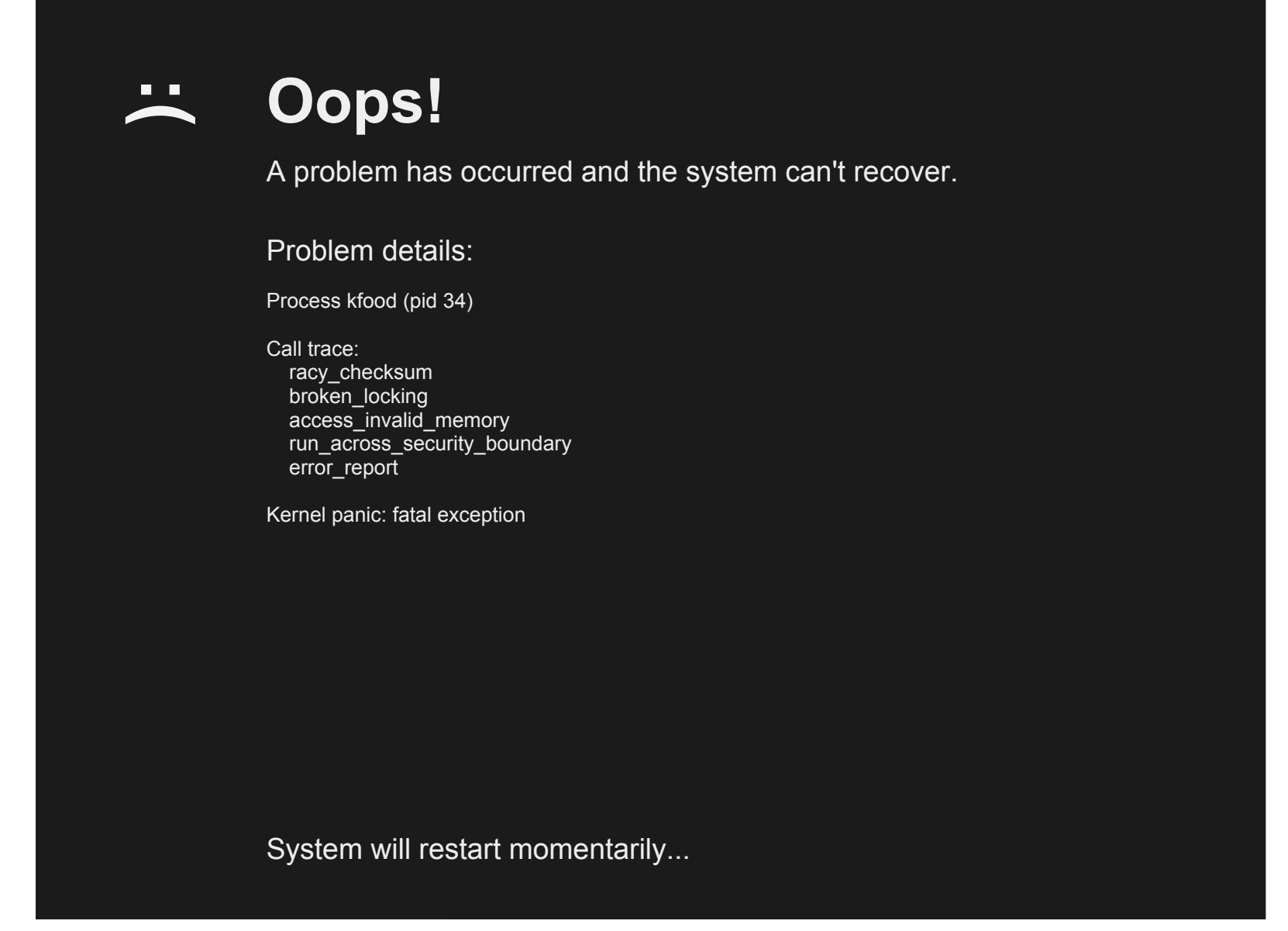
Developer



We can't rely on networking or user input. Restart should not be performed automatically because the user may not know what happened, we can enter restart loops, chances are that just rebooting won't fix the error. Additionally, the user may want to enter diagnostic mode after the restart.



Unattended

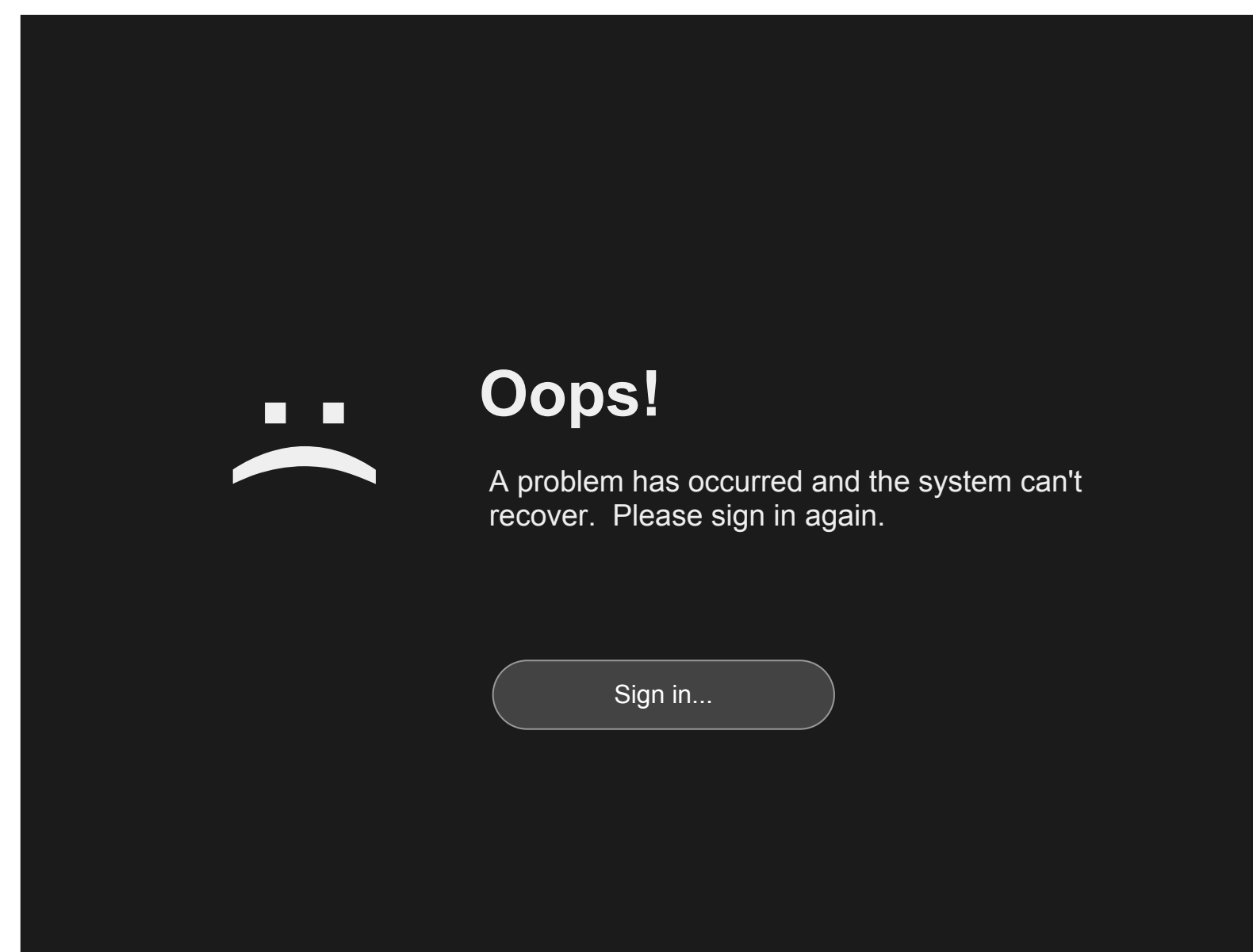


We can't rely on networking or user input. Restart should be performed automatically up to a limit. After recovery, incident should be reported transparently without user interaction.

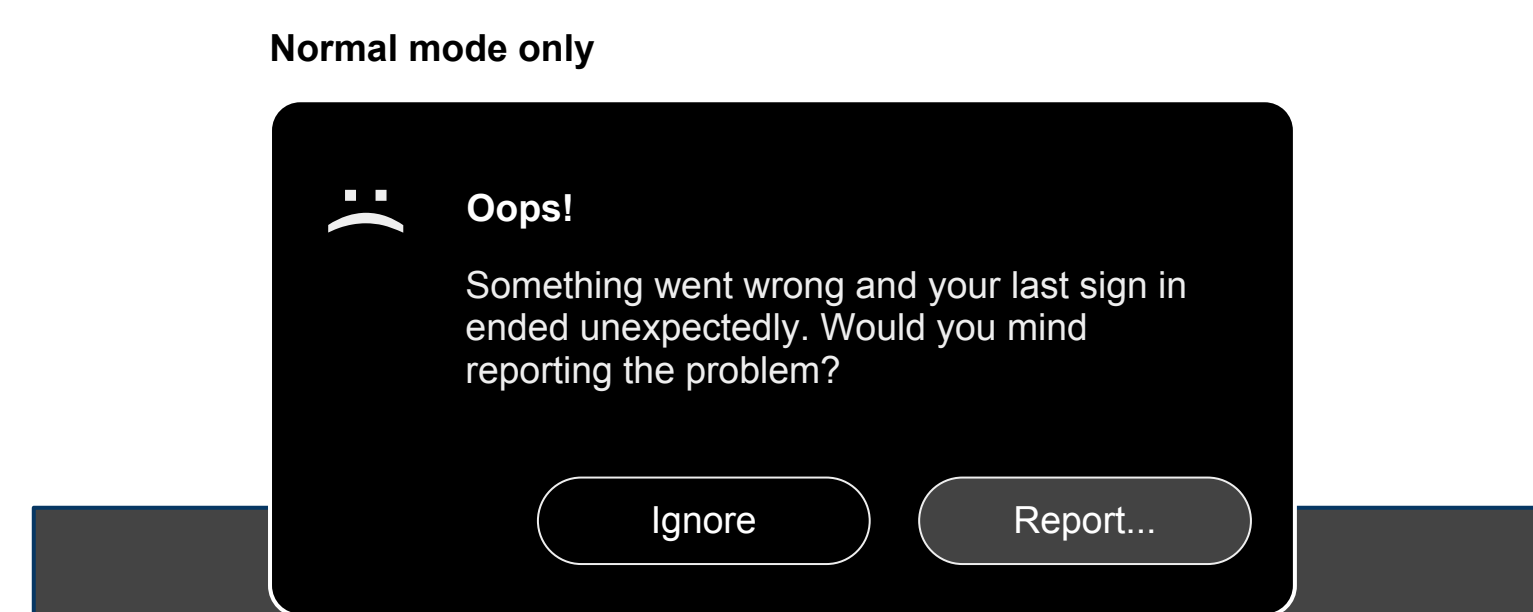
Fatal Session Error

This may occur with any error conditions that interrupt or prevent the continued use of a fully functional login session for the user.

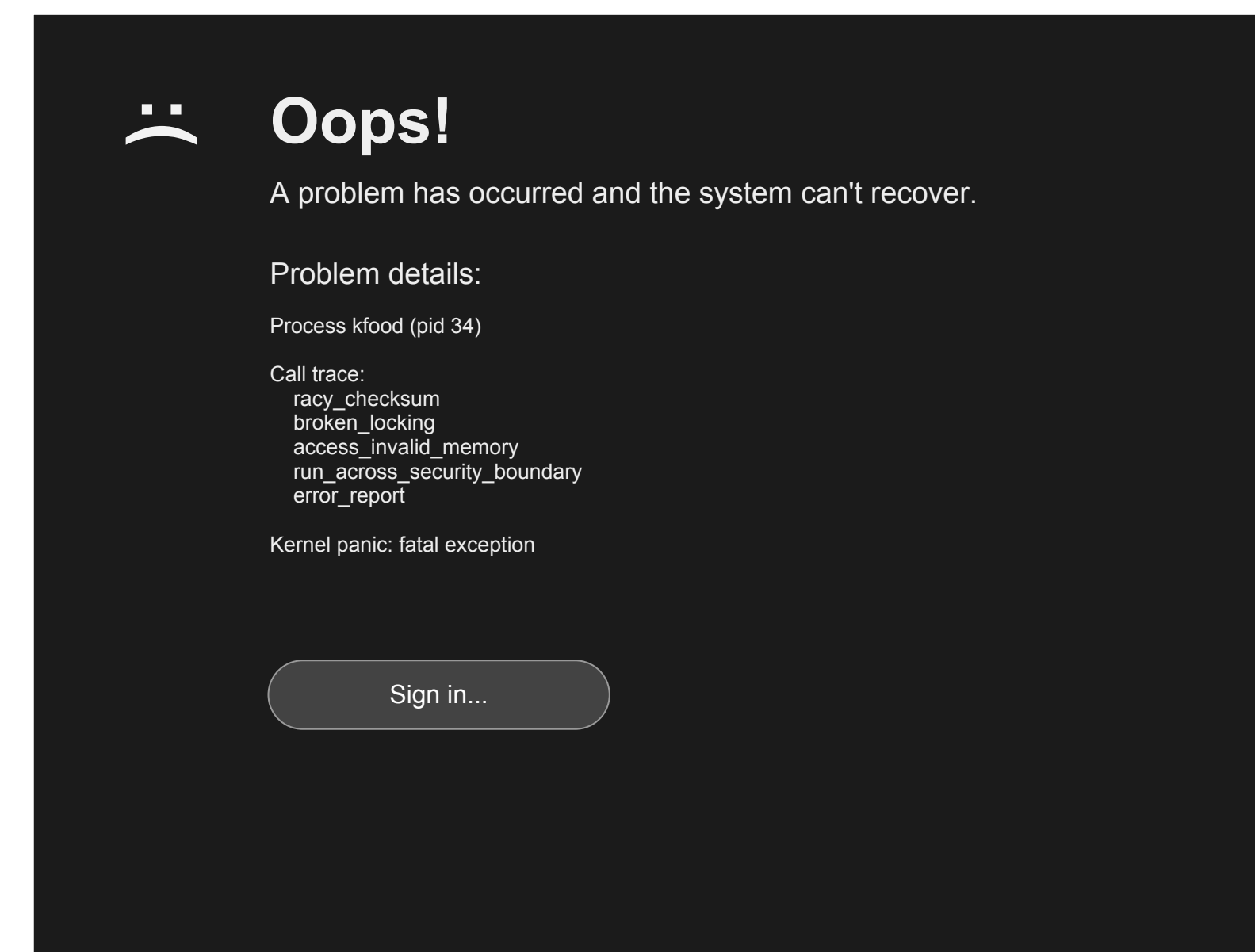
Normal / Managed



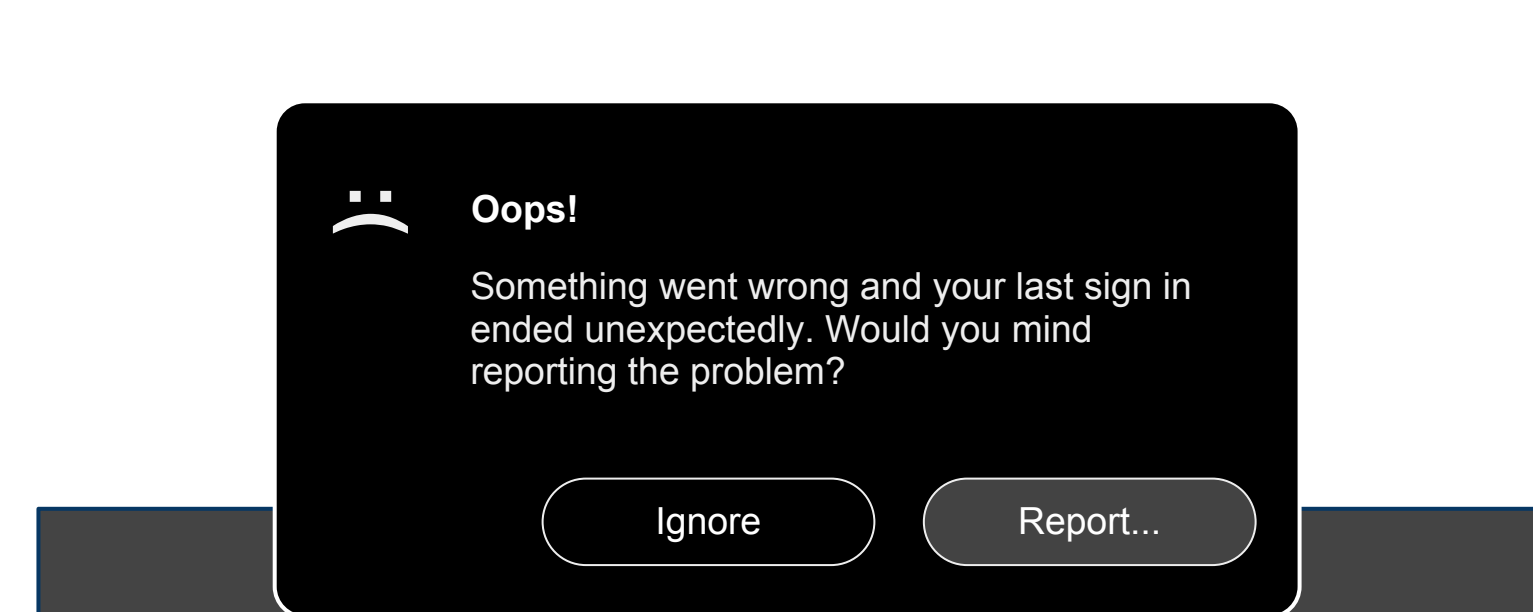
We can't rely on networking or user input. Re-login should not be performed automatically because the user may not know what happened, we can enter restart loops, chances are that just logging in again won't fix the error. Additionally, the user may want to enter diagnostic mode.



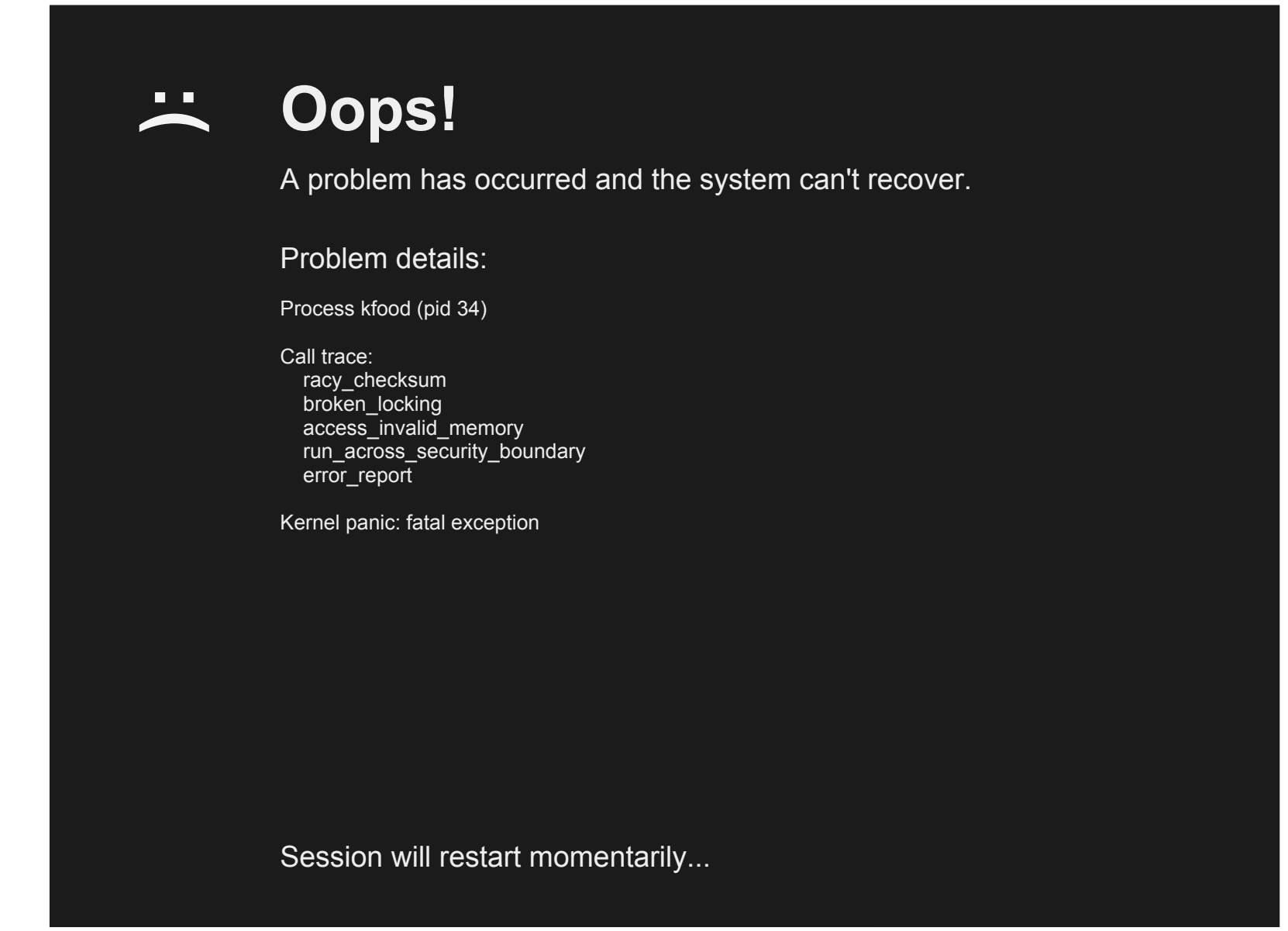
Developer



We can't rely on networking or user input. Re-login should not be performed automatically because the user may not know what happened, we can enter restart loops, chances are that just logging in again won't fix the error. Additionally, the user may want to enter diagnostic mode.



Unattended

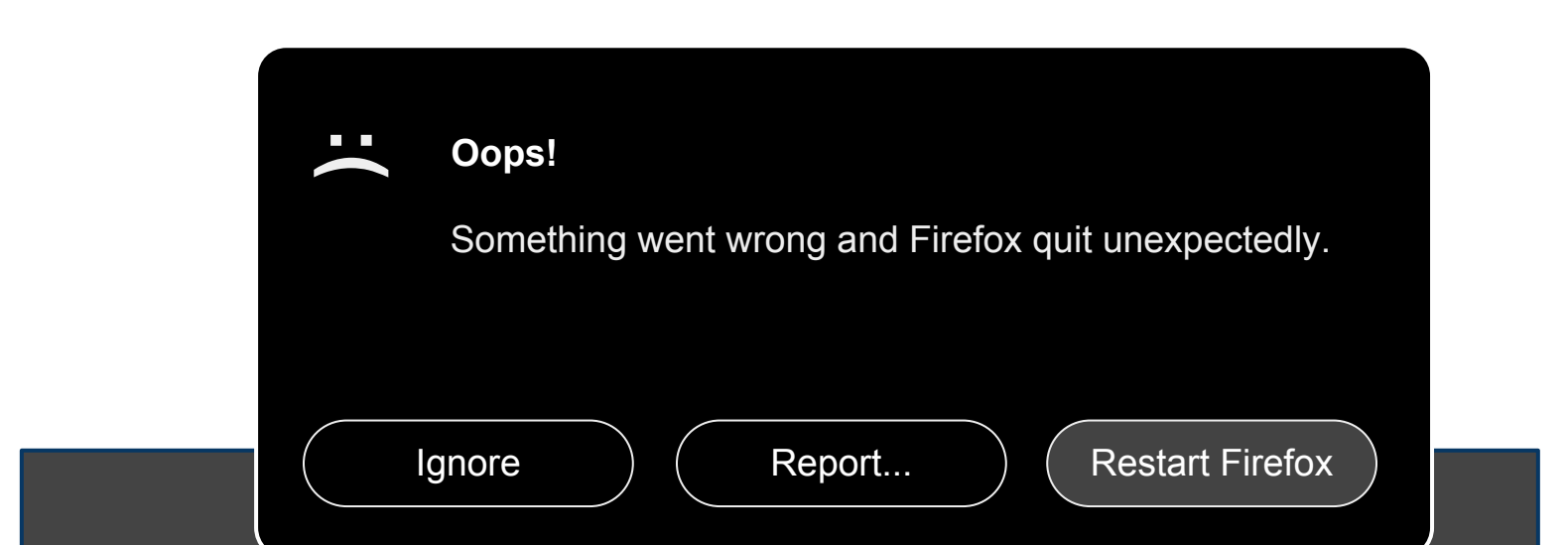


We can't rely on networking or user input. Restart should be performed automatically up to a limit. After recovery, incident should be reported transparently without user interaction.

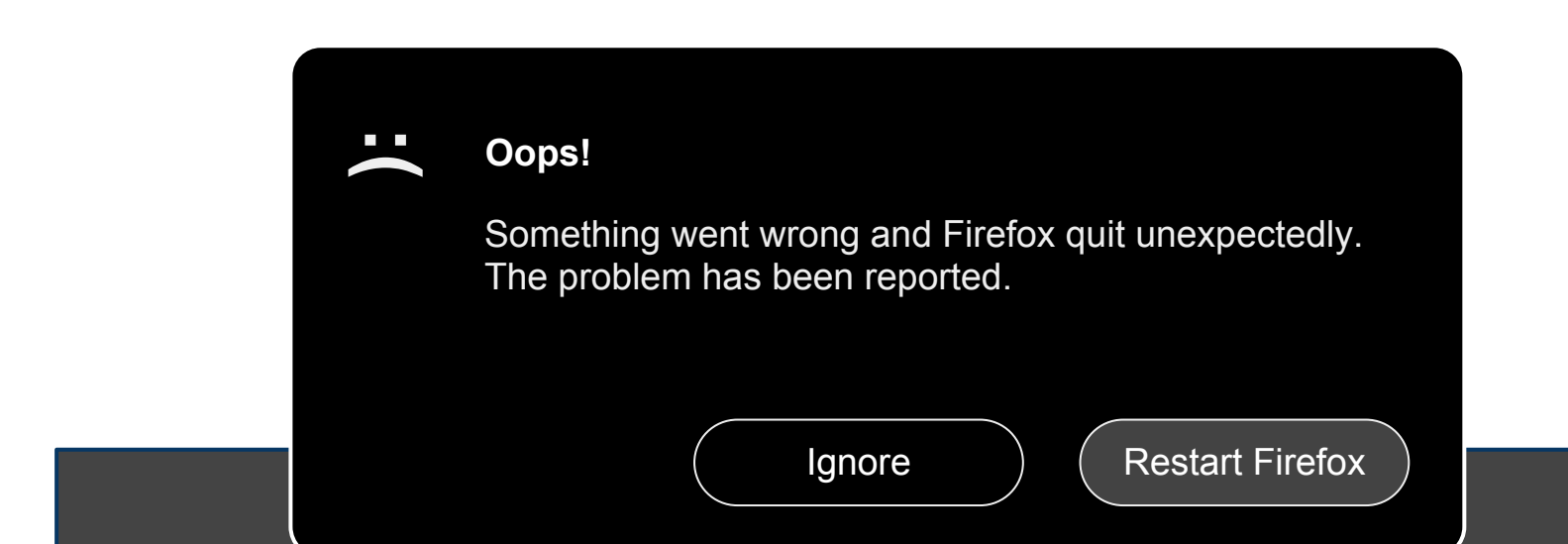
Fatal Error

This may occur with any error conditions that interrupt or prevent the continued use of a fully functional application.

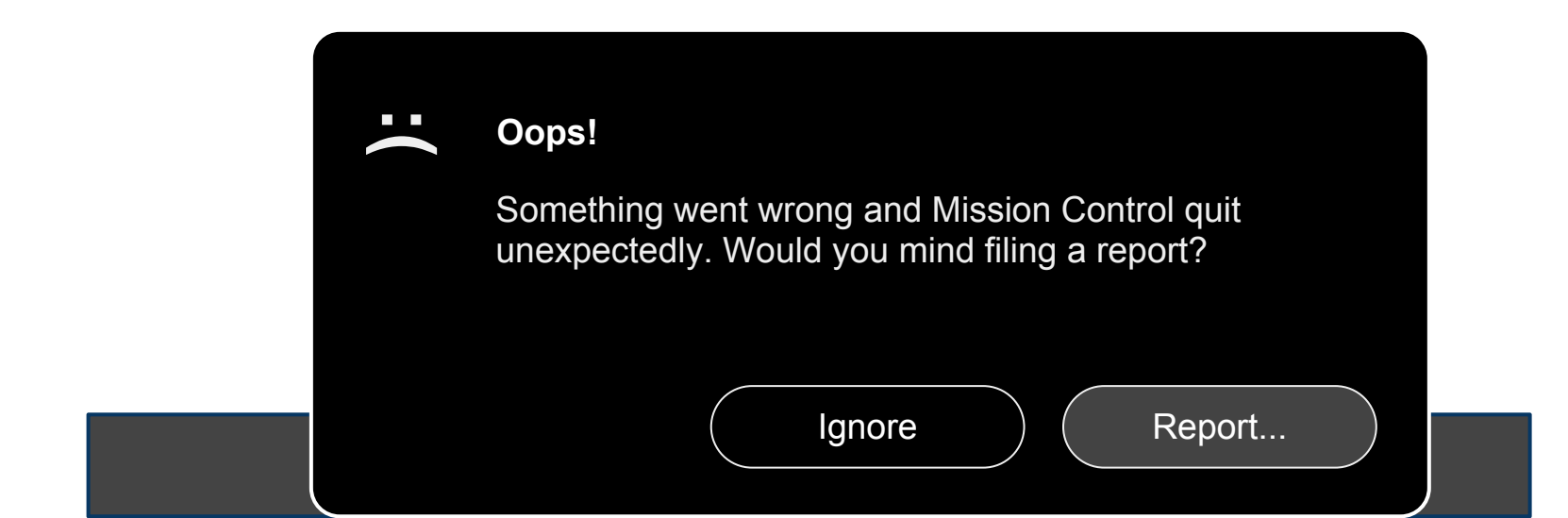
Normal



Managed



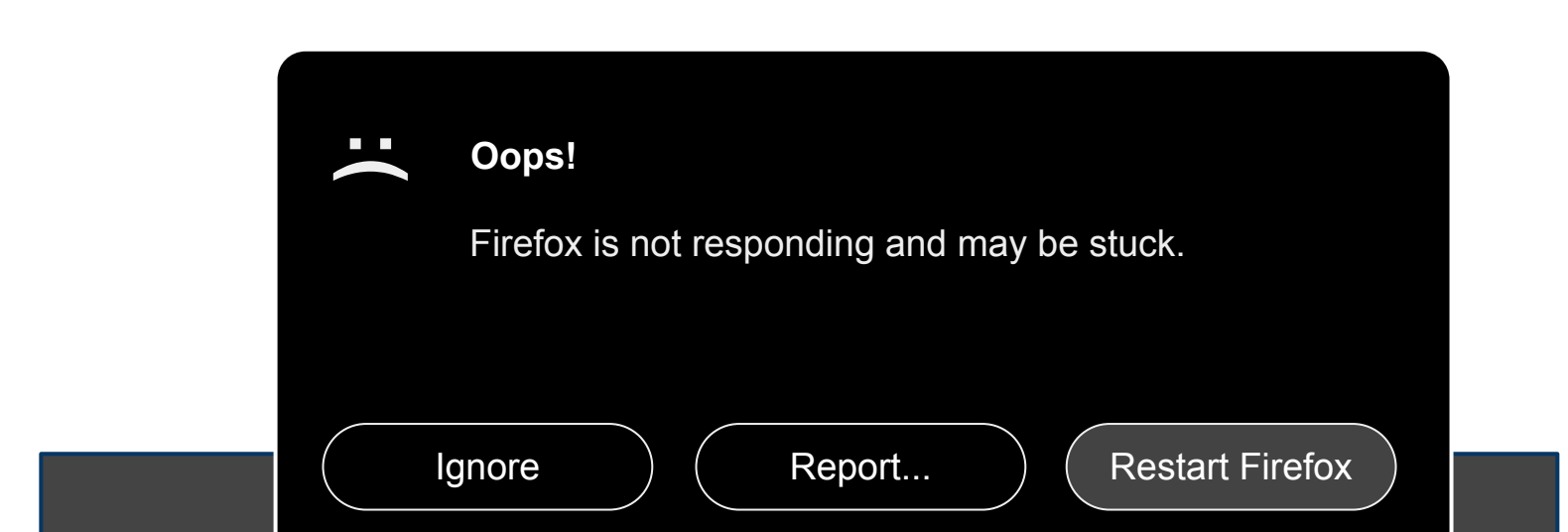
Developer



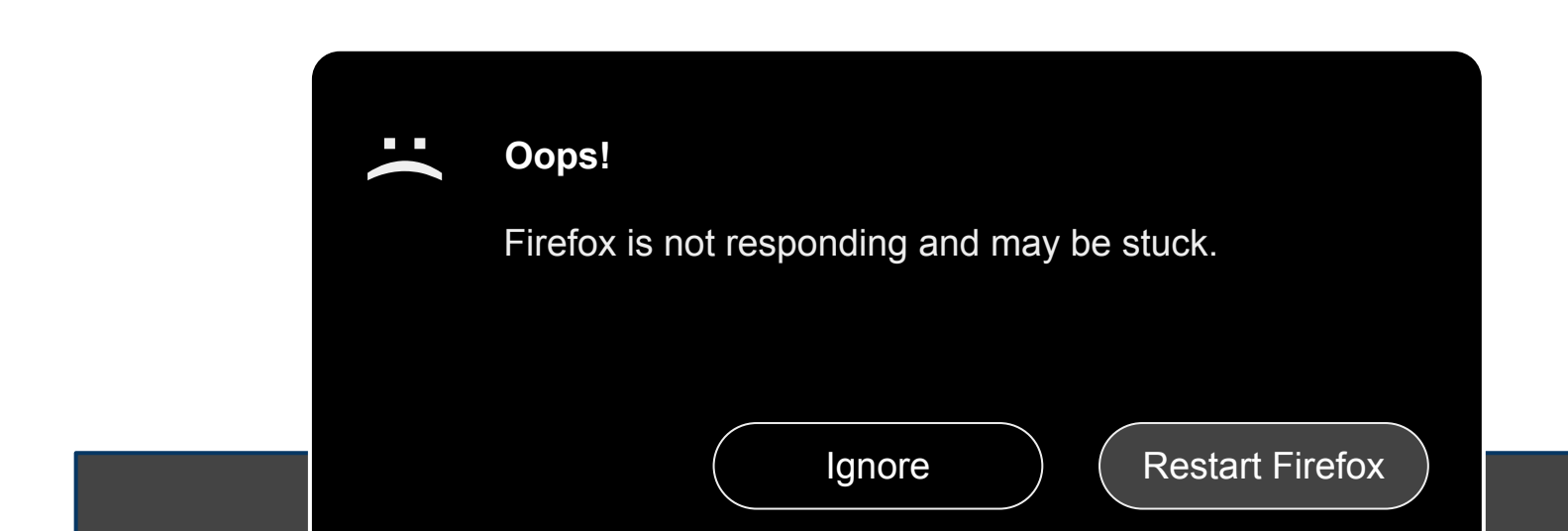
Fatal Misbehavior

This may occur when an application is not responding or if an external event triggered the application ending (ex. illegal access, out of memory).

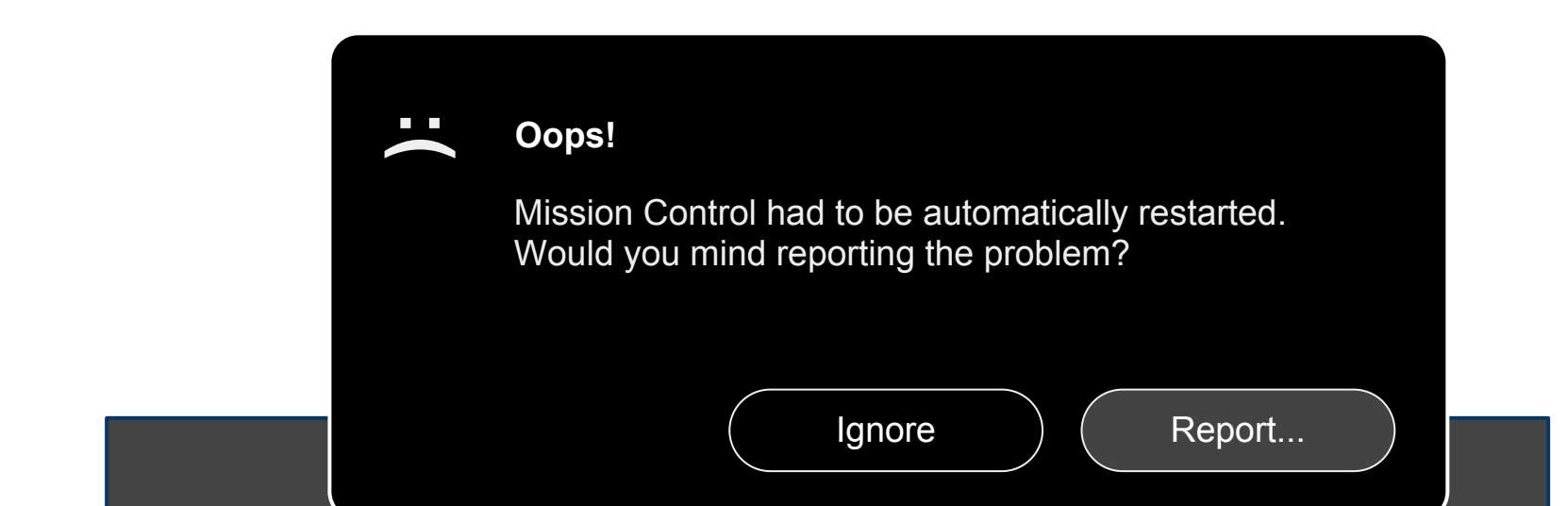
Normal



Managed



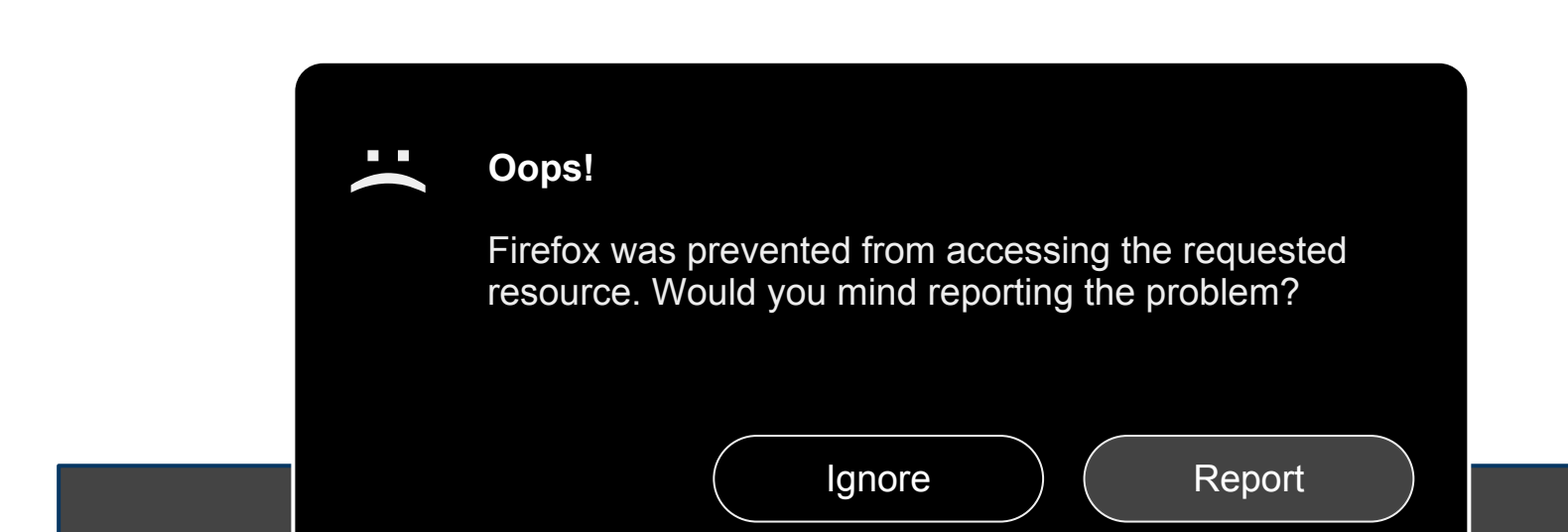
Developer



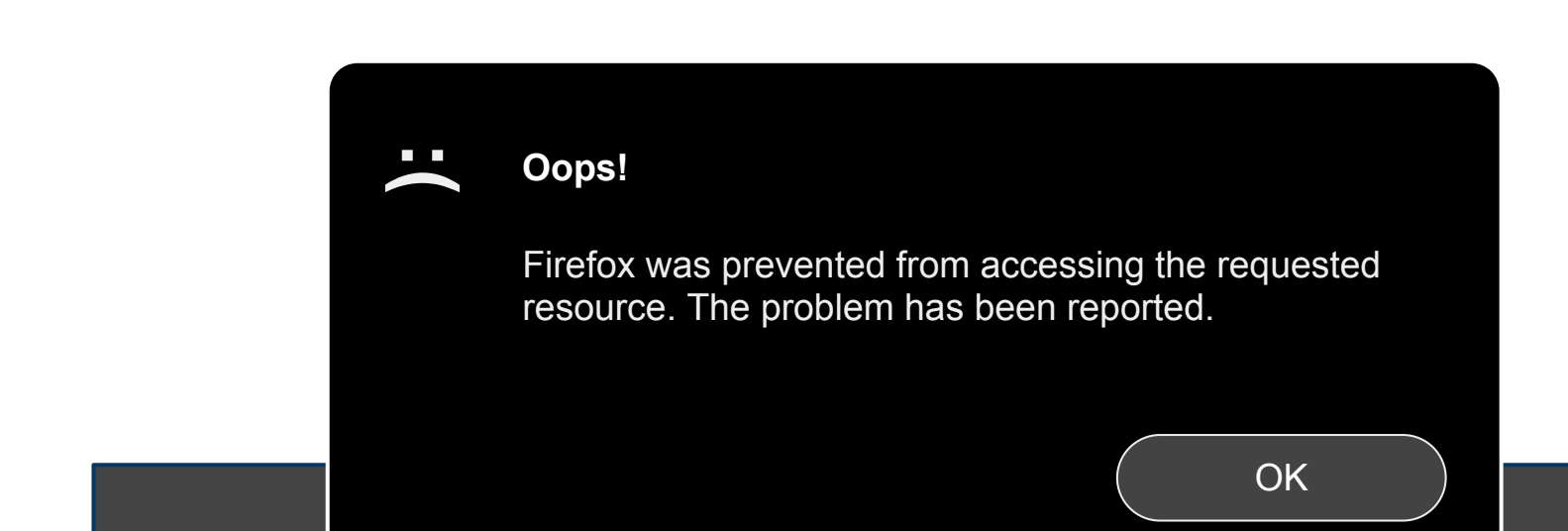
Misbehavior

A component or application did something it shouldn't have and was blocked.

Normal



Managed



Developer

